

Converting Legends of Aranna Resources to enable playing the Legends of Aranna Beta 6.0a map in Dungeon Siege 2

*Description

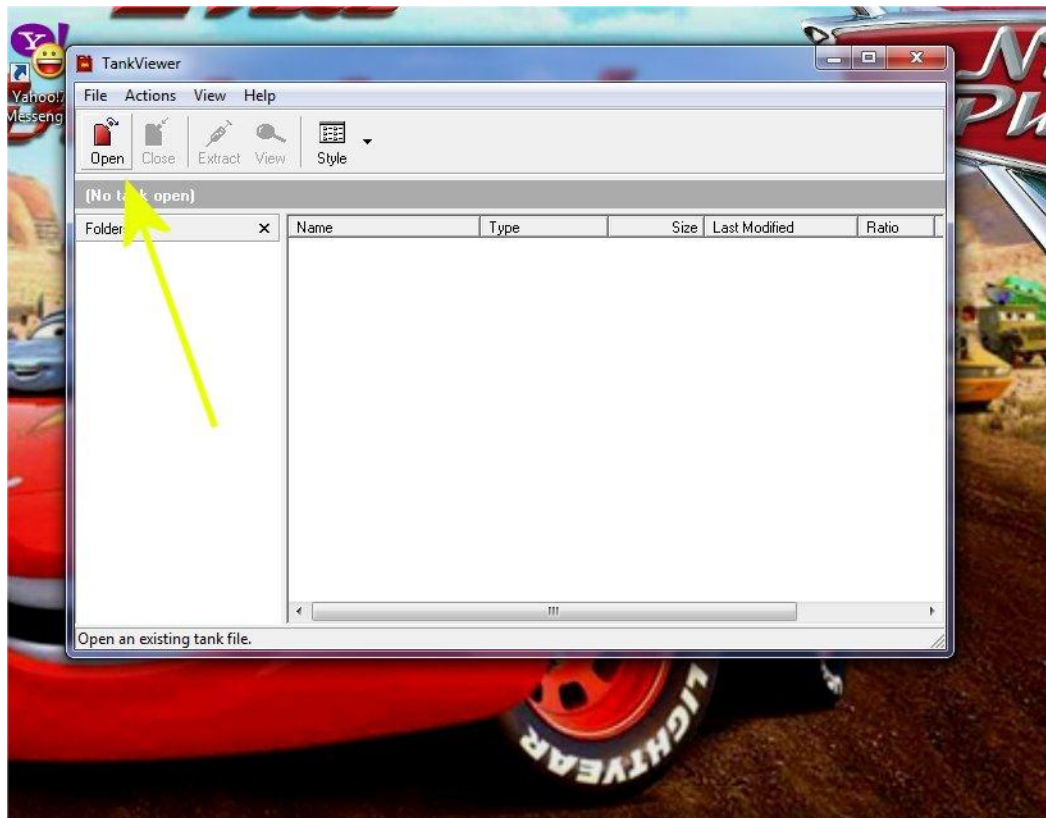
- Playing the Legends of Aranna map from the original Dungeon Siege in Dungeon Siege 2 requires converting a certain resource file called expansion.dsres from Dungeon Siege Legends of Aranna to a format that is compatible with Dungeon Siege 2 as well as downloading the mod DS1 MapPack for Dungeon Siege 2.

*Requirements / Compatibility

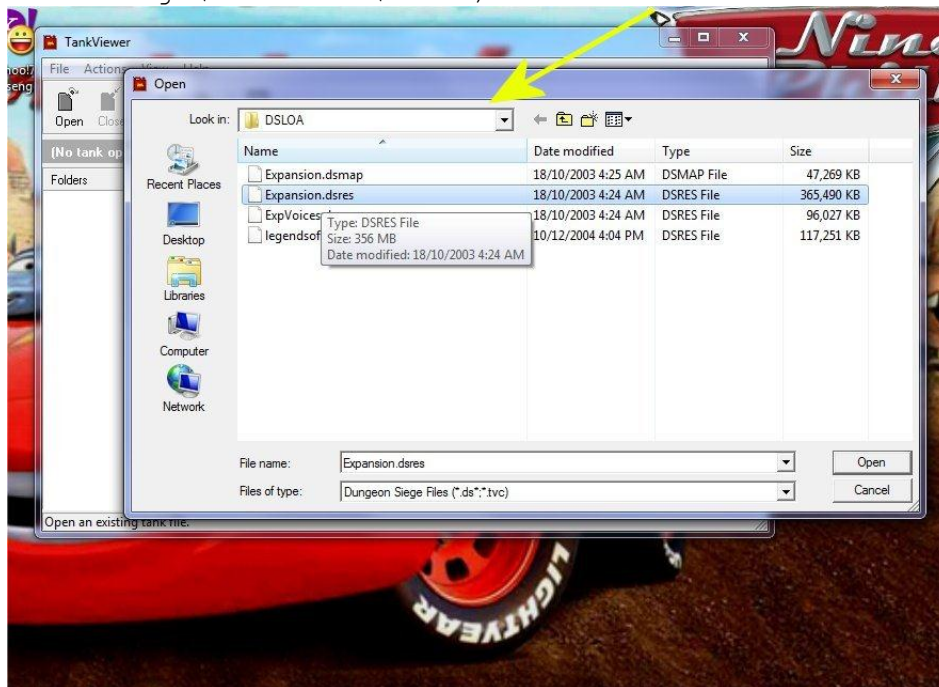
- Either an installed version of Dungeon Siege Legends of Aranna or the original installation disks.
- Dungeon Siege 1 Tank Viewer (for extracting the resources)
- Dungeon Siege 2 Tank Creator (for tanking a new resource file)
- All of the necessary files listed in the DS1_MapPack_for_Dungeon_Siege_2_Beta6.0a.rtf

*Installation Instructions

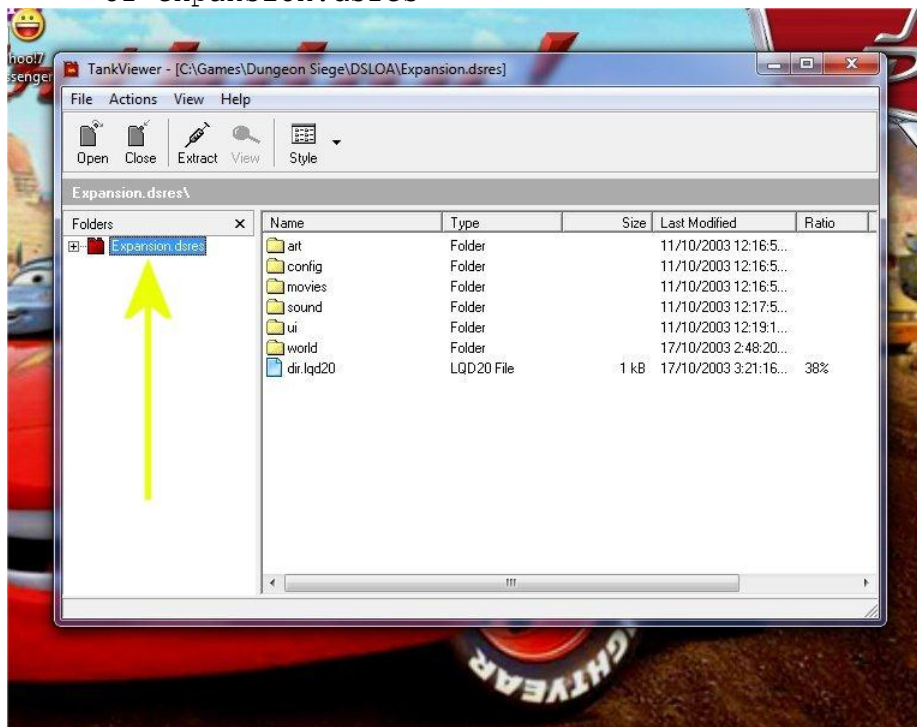
1. Open the DS1 tankviewer and click on Open in the file menu



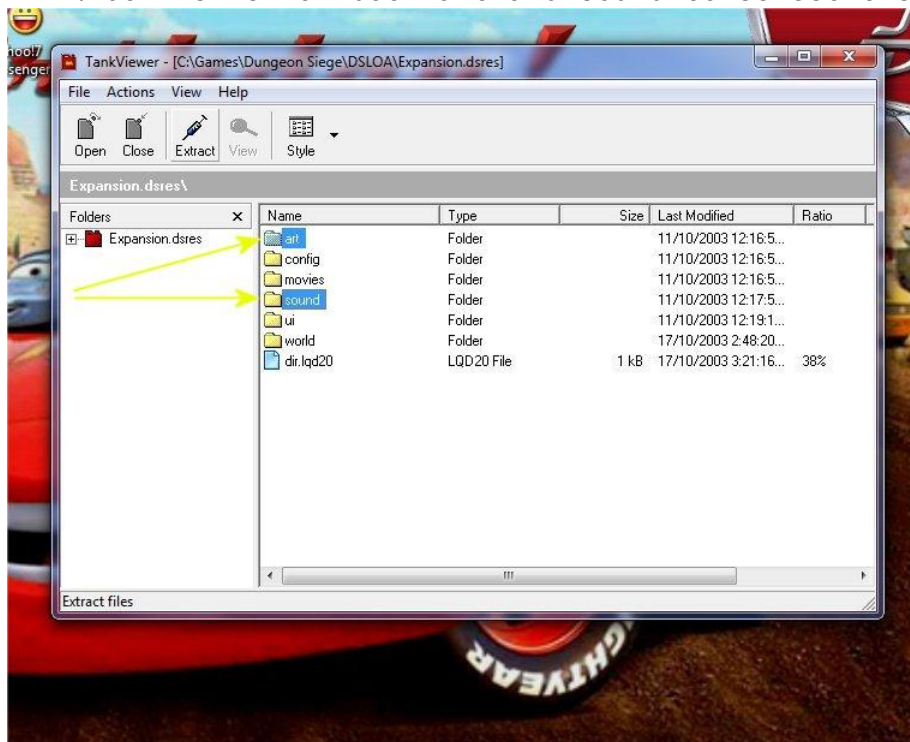
2. In the Dialog Box that opens click on the upper address bar and navigate the folder and file list to find expansion.dsres (typically located in program files\Microsoft games\dungeon siege\siege\resources\dsloa)



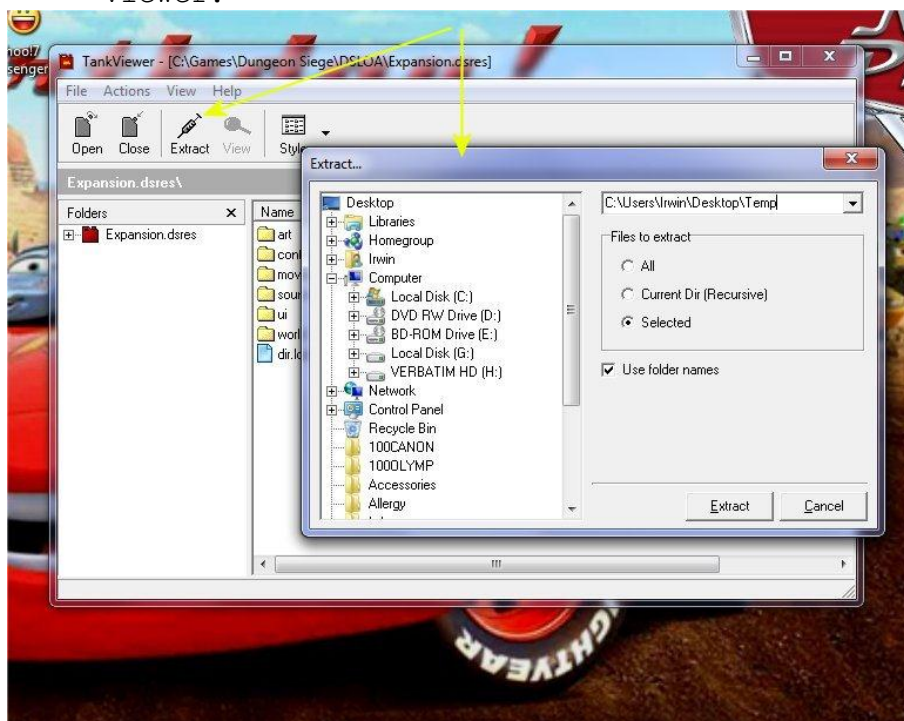
3. Click on open and this dialog box opens showing the internal structure of expansion.dsres



4. Ctrl click on both art and sound to select them

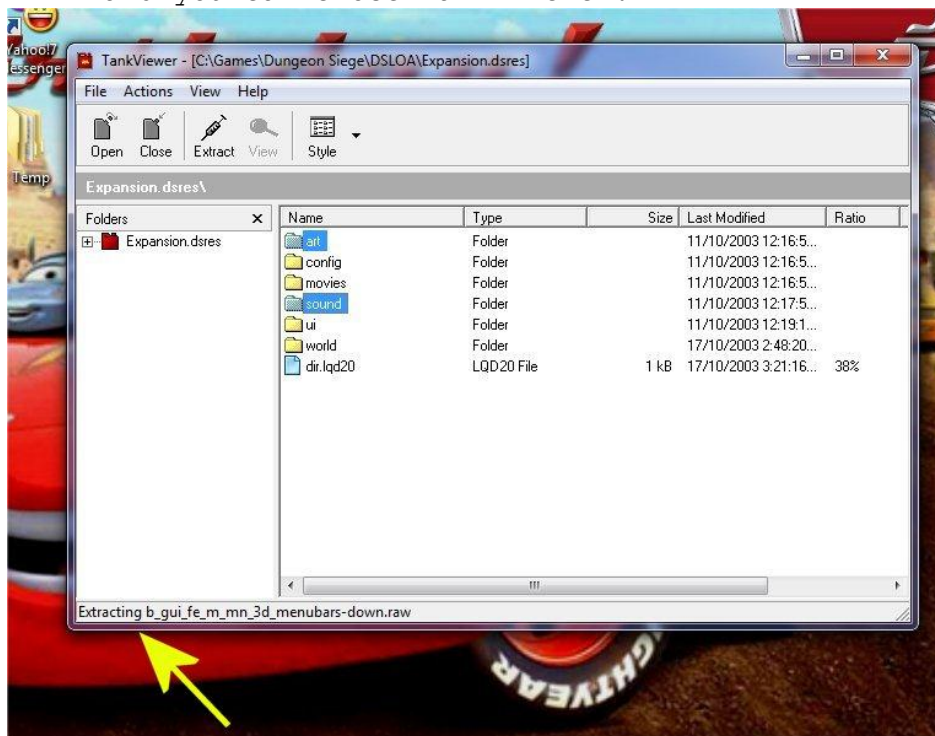


5. Then click on Extract to bring up another dialog box where you can select in the address bar where you want to extract the files. I choose Desktop\Temp for simplicity. The folder will be created by Tank Viewer.



6. While there's no progress bar, you can see the files being extracted

at the bottom left corner. When this clears, extraction has finished and you can close Tank Viewer.

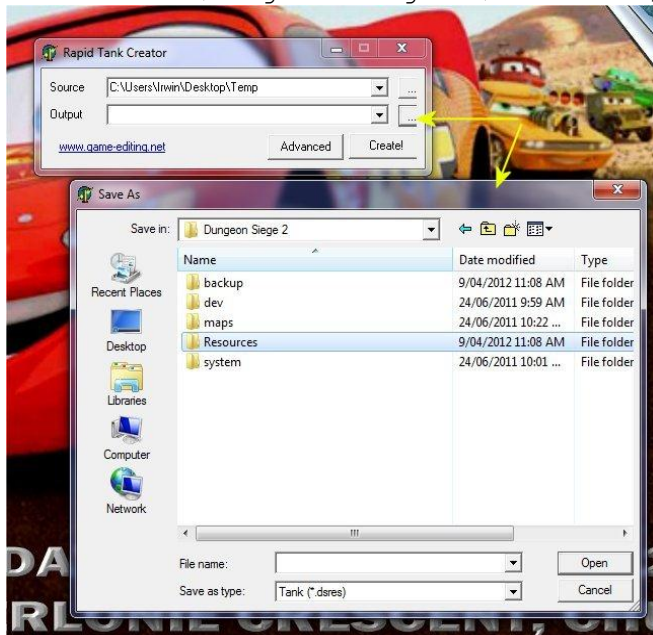


7. Open Tank Creator so the screen below appears and click on the search button for the source files.

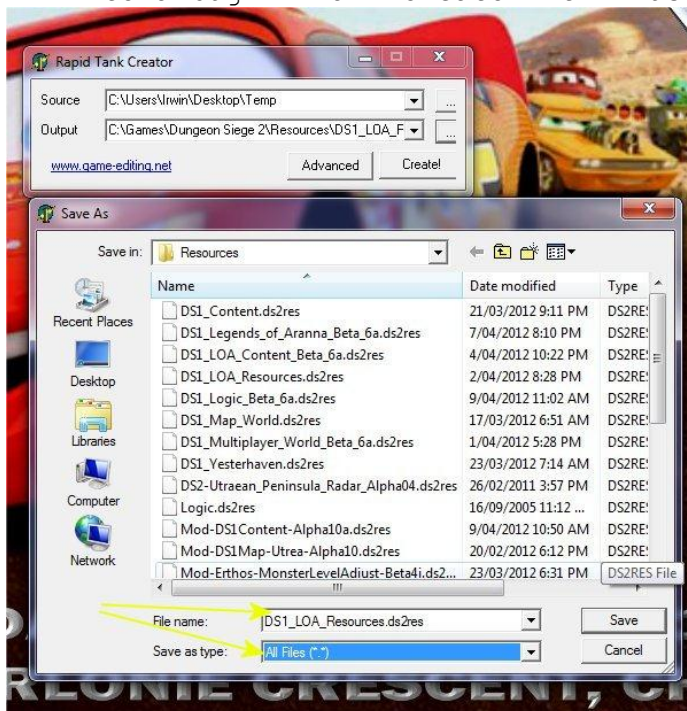


8. In the dialog box that appear click on desktop\temp (or where ever you extracted the files in step 5). Then click the search button for

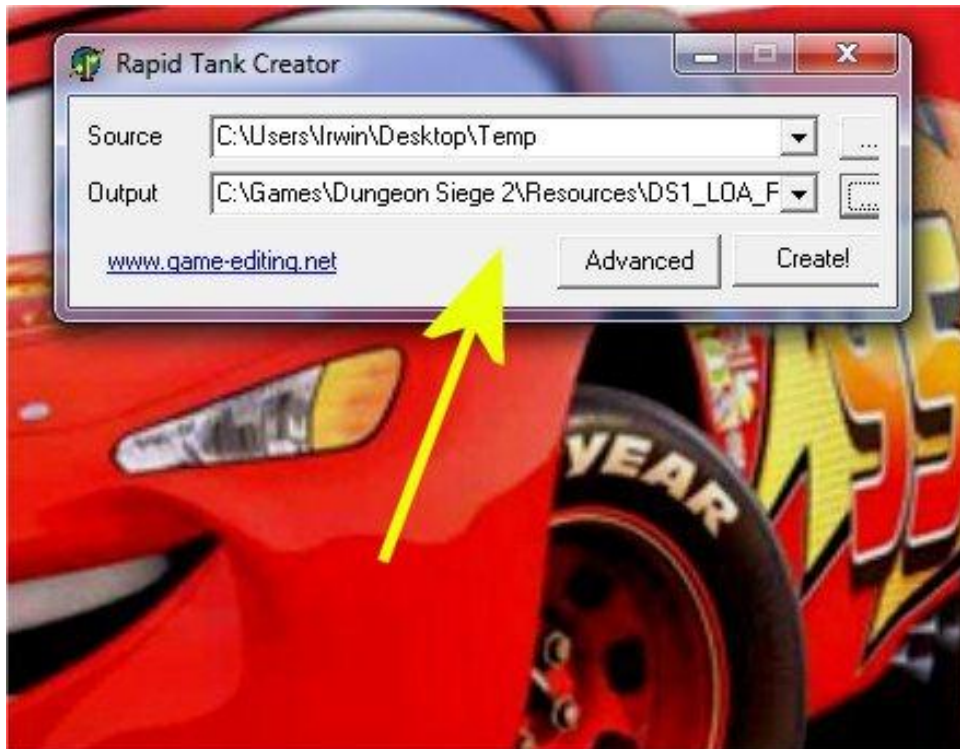
the output and navigate the file list to find Dungeon Siege 2\Resources folder (typically in program files\Microsoft Games\Dungeon Siege 2\Resources)



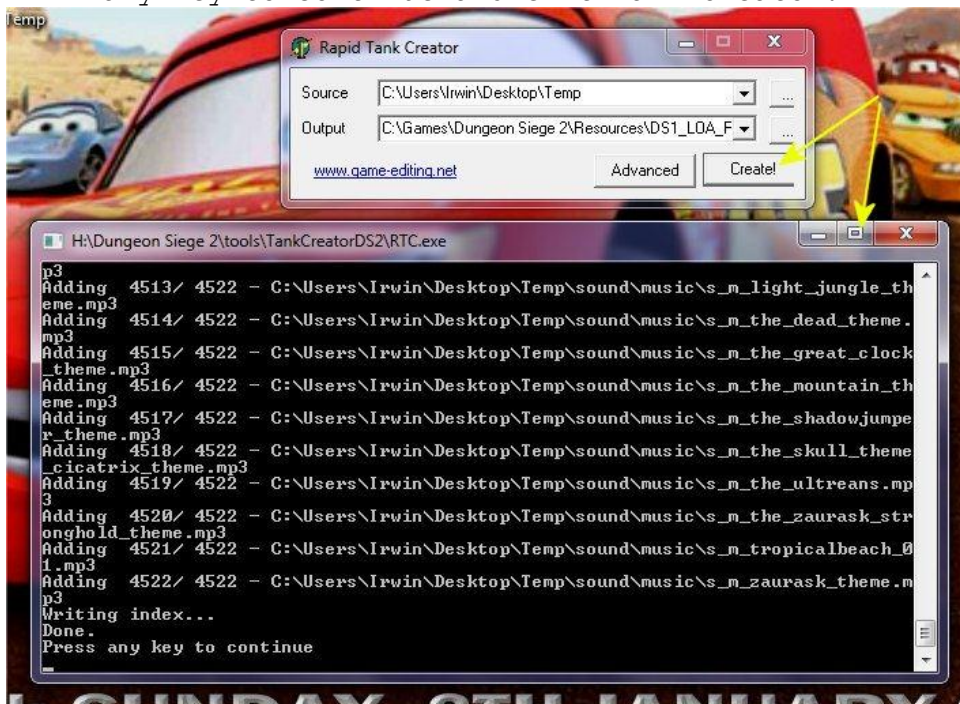
9. In the file name text box type a unique name for the resource file (here it named DS1_LOA_Resources.ds2res). It's crucially important that the name end in .ds2res and that Save as Type is All files. Due to a bug in Tank Creator it'll use dsres as type otherwise.



10. Tank Creator should now have both source and output boxes filled.

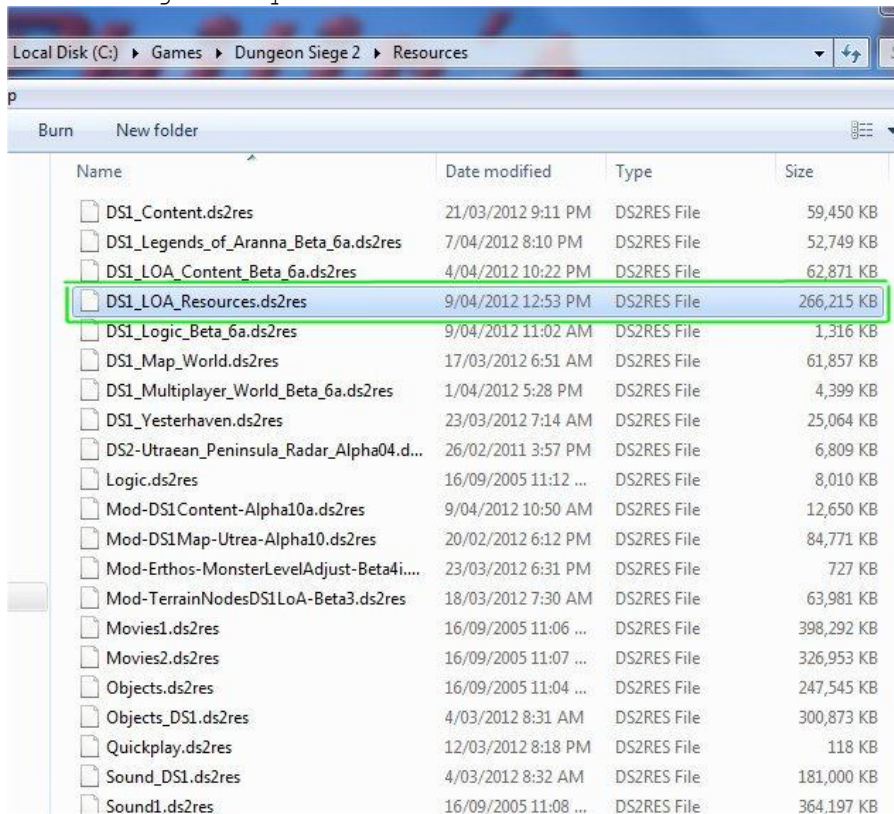


11. Click on Create and a progress dialog appears. When it finishes press any key to continue and exit Tank Creator.



12. If you navigate to the Dungeon Siege 2\Resources folder you should

now see your new resource file (here it's DS1_LOA_Resources.ds2res) and it should be around 266 Mb in size.
The temporary folder can also be deleted at this point as it's no longer required.



*Usage

- Both Dungeon Siege 2 and the Broken World expansion should automatically detect the new file and the downloaded map should work. If it doesn't then one of the preceding steps must have failed. Try contacting somebody on <http://siegetheday.org/?q=node/1330> for help and assistance.

* Removal Instructions

- Simply delete the file you made with these instructions